



## ELECTRICAL MAINTENANCE AND SHUTDOWN SPECIALISTS

The cost implications of time delays can be extensive, so choose Linkforce, the electrical specialists. When it comes to Electrical Maintenance and Projects, our specialist electrical division offers experienced personnel plus quality equipment and tooling, so we complete your time critical shutdown or project with optimal efficiency. Even more, with our highly skilled labour force committed to OHS, we rapidly respond to your project needs in a safe and timely manner. No matter the scale or the location, we ensure safety is the top priority.

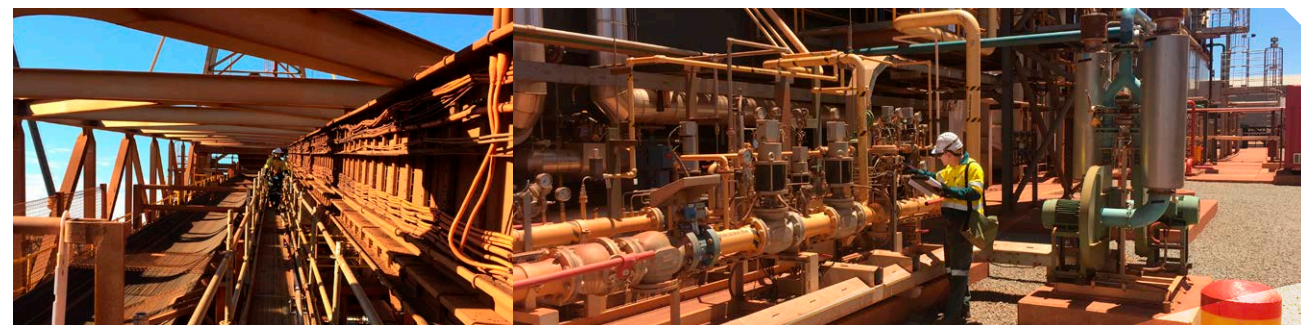
## TRUSTED EXPERIENCE

With Linkforce Engineering, no job is too large or too small and complexity is never an issue. We thrive on challenge, utilising our extensive experience to deliver a turnkey solution. With our head office in Perth, we're also on the ground in multiple locations throughout Western Australia. Our own workforce and fleet of modern equipment are always ready to go, wherever and whenever you require.

With our integrated capability, we tailor a solution for each project, assembling a specialist workforce from our team of experienced tradespeople and management. Our leadership skills and site experience represent vital assets for your project, ensuring all work is completed on time, safely and efficiently.



LINKFORCE ENGINEERING



## SAFE. VERSATILE. EFFICIENT.

The proven systems implemented by Linkforce Engineering are designed to optimise productivity. However, at the same time, our operational focus is constantly committed to an important goal of zero harm to people, the environment and local communities. We consider sustainable environmental outcomes and quality performance as essential components to success, with the health and safety of all personnel of fundamental importance.



Leadership at Linkforce isn't the sole responsibility of senior management — every employee is a leader in their respective field. As a group, we're renowned for overcoming the toughest challenges, always finding innovative, cost-effective solutions to ensure productivity is optimised.

To discuss a tailored, cost-effective solution from a proven performer, contact Linkforce Engineering.

### HEAD OFFICE:

668 Murray St, West Perth WA 6005  
PO Box 1845, Subiaco WA 6904  
T: +61 8 9287 0800 | F: +61 8 9287 0801 | EC11966

**NEWMAN:**  
17 Willis St,  
Newman WA 6753

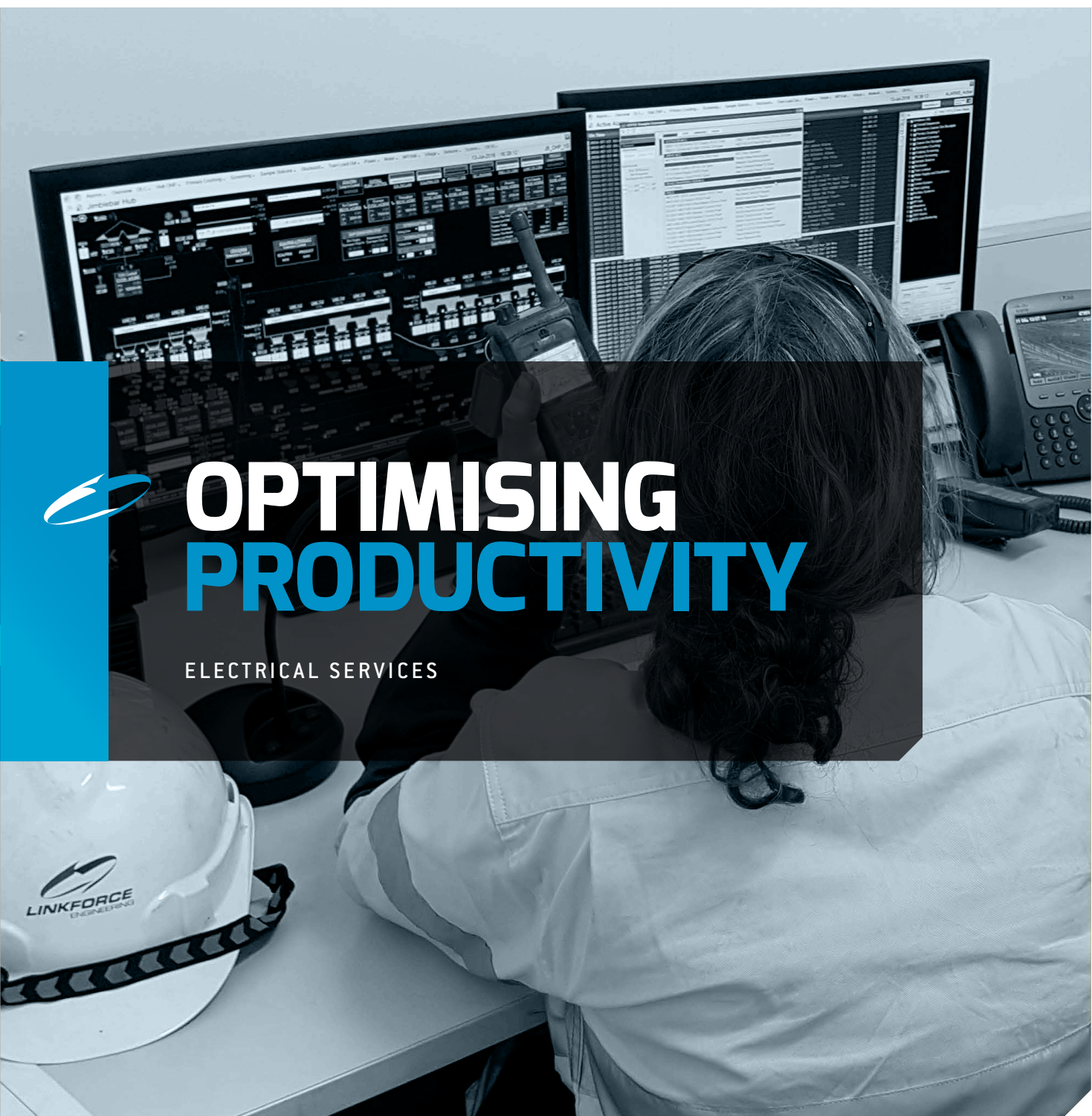
**PORT HEDLAND:**  
Lot 117, Pinnacles St,  
Port Hedland WA 6721

**KARRATHA:**  
Lot 205, Seabrook Cres,  
Karratha WA 6714

**NEWMAN:**  
Lot 1658 Laver St,  
Newman WA 6753

**KEWDALE:**  
11 Hodgson Way,  
Kewdale WA 6105

[LINKFORCE.COM.AU](http://LINKFORCE.COM.AU)



## OPTIMISING PRODUCTIVITY

ELECTRICAL SERVICES



## OUTSTANDING PERFORMANCE

With excellent communication skills, and outstanding task-execution processes, the Electrical Services Division gets the job done. Even more, our total commitment to high-quality service, coupled with our industry-leading expertise, ensures superior cost efficiency. Our effective processes are grounded in a culture of team accountability, task ownership and job responsibility - supported by robust policies and procedures. This ensures we always perform to the highest standards. You can rest assured that our dedicated team of experienced professionals are always:

- Trained to the highest safe work standards
- Committed to environmental management
- Committed to providing outstanding results



LINKFORCE ENGINEERING

### Professional electrical and engineering services for Mining, Construction and Infrastructure

- Electrical Shutdown execution capability
- Scheduled auditing and inspection services
- Fixed and mobile plant upgrades
- Sustaining Capital Projects
- Long Term Maintenance Services
- Full EPC capability
- HV, LV, Instrumentation and Controls
- Specialist Services - belt weightometer servicing,  
HV / LV switchgear servicing and testing





# COMPLETE ELECTRICAL SOLUTIONS

We can plan and deliver any project; large or small. It starts with our highly skilled and trade qualified workforce: the competence of our electrical teams is unparalleled. Even more, with our capability to provide mobile tool containers, Layher scaffolding equipment, plus plant and transport logistics, it makes us the number one choice for your next shutdown.



## ELECTRICAL SHUTDOWNS

Linkforce Engineering is an industry leader in electrical shutdowns. Our knowledgeable and pragmatic shutdown teams deliver success through the combination of:

- Prioritised safe works standards
- Efficient and proven processes
- In-depth technical knowledge
- Collaborative and supportive leadership

That's why our business capable approach consistently delivers shutdowns that are:

- Safety focused and quality controlled
- On time and on budget
- Task completion compliant
- Optimised to meet client expectations

## ELECTRICAL PROJECTS

As a stand-alone electrical contractor, with full access to the extensive complement of Linkforce resources, our project delivery capabilities are expansive. Our capability to execute large, complex projects is proven. Supported by an innovative business-integrated planning system, coupled to an extensive logistics department, high volume resources are not a problem. To meet the needs of any sized project, we quickly mobilise a large team of quality tradesmen, plus all the plant and equipment needed. Our experienced leadership team and project management systems ensure the efficient use of resources. This means we complete works in accordance with client specifications, plus Australian industry standards.



## TURN-KEY SOLUTIONS

Linkforce is your trusted, single source contractor for the design, supply, construction, commissioning and ongoing maintenance of your electrical assets. With our vast experience in capital works, major expansion projects, shutdowns, design and commissioning, you can engage us from concept to completion.



LINKFORCE ENGINEERING



# HOW CAN YOU BE CERTAIN YOU'LL BE READY AFTER SHUTDOWN?

## CHOOSE LINKFORCE.

## FLEXIBILITY AND RELIABILITY

With our modern fleet of vehicles and our plant equipment based in depots throughout WA, we avoid reliance on outside resources. We are certain of our delivery capabilities, timeframes and costs. Total equipment ownership, coupled with our experienced workforce, provides the flexibility to allocate resources when and where they are required.



## PROVEN CAPABILITY

As both an integrated and stand-alone division of the Linkforce specialist engineering group, our electrical capabilities are proven in maintenance, projects and shutdowns across the resources and infrastructure sectors. This includes:

- Newman Airport – facilities upgrade
- BHP – Stacker and Reclaimer Drag Chain and HV Upgrades
- MRA – Scarborough Beach foreshore redevelopment
- RTIO – Yandicoogina Fixed Plant Workshop
- RTIO – Yandicoogina construction camp and central facilities
- Transfield Worley – Yarmima power station shutdowns and maintenance
- BHP/ RTIO / FMG – Ongoing Maintenance, Shutdowns and Project Works
- BHP - Earthing design and upgrades



## THE VALUE OF A QUALITY ELECTRICAL PARTNER

The electrical and controls portion of a project or shutdown can create some of the sharpest pain points. Although utilising less labour than SMP works, they're executed at the tail end of a shutdown or project and have the highest complexity. When entrusting your electrical requirements to Linkforce, rest assured you're in safe hands. We constantly evaluate schedule slippages and, if required, implement changes to ensure on-schedule shutdown and project completion.



## TAILORED SOLUTIONS TO COMPLEX PROBLEMS

As an integrated, specialist electrical services group, we design and deliver electrical projects and shutdowns safely, on time and on budget. No matter the scale, complexity or location, our integrated capabilities allow us to tailor a unique solution to your electrical requirements.

We offer:

- Experienced senior projects and maintenance teams
- Specialist design and consultation
- Exceptionally skilled tradespeople
- Depots located in Kewdale, Newman, Karratha and Port Hedland